

OFFICIAL RACE PROGRAM  
WITH SAILING INSTRUCTIONS



20 12  
**BAYVIEW**  
ONE DESIGN REGATTA  
DETROIT



**INAUGURAL REGATTA**

**MAY 31 - JUNE 3, 2012**

**BAYVIEW YACHT CLUB**  
100 CLAIRPOINTE, DETROIT, MI • 313.822.1853 • BYC.COM

*Proud sponsor of the Inaugural*  
Bayview One Design  
Regatta



*Saganing  
Eagles Landing  
Casino®*



*Eagle Bay  
Marina<sup>LLC</sup>*


Bayview Yacht Club  
*"established 1915"*

## *Welcome to Bayview Yacht Club,*

Racers, family, friends and fellow members of Bayview Yacht Club, welcome to the inaugural year of the Bayview One Design Regatta, we the Board of Governors and Commodores welcome you. This new exciting event has been formulated for you the sailor; we want you to leave this weekend with a sense that you have just been involved with something special. You the sailors are the ambassadors to sailing and it will be through your words that this event will grow to greater numbers for years to come. The members here at Bayview look upon Bayview as there second home, we want you our guest to feel the same way. If you need anything while you are here or have a problem that may arise please feel free to ask any of staff for assistance, they will be glad to help or direct you to someone who can be of assistance. I would like to thank Governor Hanson Bratton, and Karl Kuspa for the daunting hours organizing this spectacular event for you to enjoy. So sail fast, and sail smart, lets all have a great time, and be safe.



Regards,



Jeffrey Allen Henderson Sr.  
Commodore



ACURA  
ADVANCE

**SAILING** *under the* **STARS**

Charity, preview event for the 2012 Bell's Beer Bayview Mackinac Race

*Saturday, June 30th 6-11pm*

25 RESTAURANTS \* 2 STAGES \* 1 BIG EVENT BENEFITING 6 LOCAL CHARITIES

*This Schedule is subject to change.*

### Wednesday, May 30, 2012

- 1500-1900 .....Registration in Regatta Room (all classes)  
On-Going .....Launching

### Thursday, May 31, 2012

- 1200-1830 .....Registration in Regatta Room (all classes)  
On-Going .....Launching  
1830.....Opening Ceremony & 1st Skippers Meeting on  
Main Stage  
1600-1900 .....Music by “Brian Sheehan & Chris Emmerson” on  
Lawn brought to you by Eagle One Sailing  
1700-1900 .....Moth Sailboat Exhibition Racing in front of  
Bayview brought to you by Yachtscoring.com and  
Total Foundations

### Friday, June 1, 2012

- 0700.....Jerome’s Hut Open to Purchase Breakfast, Ice, etc.  
0800.....Harbor Start  
1000.....First Warning Gun  
1500-1900 .....Registration in Regatta Room (2 Day Classes)  
1500-2000 .....\$1 Bells Beer Drafts & \$2 Mount Gay Rum Drinks  
1600-1900 .....Music by DJ on Main Stage  
1600-1900 .....Music by “Yorg and Bryce” on Lawn brought to you  
by a Happy Member  
1700-1900 .....Moth Sailboat Exhibition Racing in front of Bayview  
brought to you by Yachtscoring.com and  
Total Foundations  
1700-1900 .....A La Carte Dinner  
1730.....Daily Awards  
1830.....2nd Skippers Meeting (2 Day Classes)  
1900-2200 .....Music by “Cosmic Groove” on Main Stage brought  
to you by the Eric Hollerbach and  
Gov Brad Kimmel Families  
1900-2200 .....Music by “Red Devil & The Whisperers” on Lawn  
brought to you by BYC’s Favorite non-Member  
2100-? .....After Hours Food

# Schedule of Events



## Saturday, June 2, 2012

- 0700-0900 .....Registration in Regatta Room (2 Day Classes)
- 0700.....Jerome’s Hut Open to Purchase Breakfast, Ice, etc.
- 0800.....Harbor Start
- 1000.....First Warning Gun
- 1400?.....Commodore’s Champagne Race from  
Main Race Areas to Bayview
- 1500-2000 .....\$1 Bells Beer Drafts & \$2 Mount Gay Rum Drinks
- 1600-1900 .....Music by DJ on Main Stage
- 1600-1900 .....Music by Acoustic Guitar TBD on Lawn brought to you  
by Macro Connect and Nickels Boat Works
- 1700-1900 .....A La Carte Dinner
- 1730.....Daily Awards
- 1900-2200 .....Music by “Good Gravy” on Main Stage
- 2100-? .....After Hours Food

## Sunday, June 3, 2012

- 0700.....Jerome’s Hut Open to Purchase Breakfast, Ice, etc.
- 0800.....Harbor Start
- 1000.....First Warning Gun
- 1500-? .....Music TBD brought to you by Bar Harbor and  
Wolverine Oil
- 1500?.....Closing Ceremony & Overall Awards
- 1500-1800 .....\$1 Bells Beer Drafts & \$2 Mount Gay Rum Drinks
- 1600-1800 .....A La Carte Dinner

If you have any questions feel free to contact Hanson Bratton at Hanson@totalfoundationsllc.com or Karl Kuspa at sailski1@yahoo.com.

**GENUINE**  
trade mark  
**ARMADILLO**  
**PRINTWEAR**  
Berkley, Michigan  
**GoArmadillo.com**

**Wolverine Inflatables**  
A Liferaft Service and Sales Center  
P.O. Box 759 · Taylor, MI 48180

|  |   |
|--|---|
| Mark Bratton<br>586-747-0737<br>markdbratton@aol.com | Hanson Bratton<br>248-640-4407<br>hrbii@aol.com |
|--|---|

**“We Thrive Under Pressure!”**





# Sailing Instructions

## *Bayview Yacht Club is the Organizing Authority (OA)*

### 1. RULES

**1.1** The regatta shall be governed by the rules as defined in the Racing Rules of Sailing 2009-2012 (RRS), the Notice of Race for the 2012 Bayview One Design Regatta and the Notice of Race issued specifically for the Beneteau First 36.7 class.

**1.2** Racing rule 'Racing Signals' will be changed as follows: At the conclusion of the last windward leeward race on Saturday, June 1 2012, Code Flag 'R' (yellow cross on a red field) will be displayed to indicate the start of the optional Commodore's Champagne Race for those classes eligible to compete in lieu of the blue 'On Station' flag.

### 2. NOTICES TO COMPETITORS

Notices to competitors will be posted on the Official Regatta Notice Board at Bayview Yacht Club in the Mackinac Room.

### 3. CHANGES IN SAILING INSTRUCTIONS

Any change in the Sailing Instructions will be posted before 0800 hours EDT on the day it will take effect except that any change in the schedule of races will be posted by 2000 hours EDT on the day before it will take effect.

### 4. SIGNALS MADE ASHORE

**4.1** Signals ashore will be displayed from a flagpole on the balcony near the south end of the BYC Harbormaster's building (north of the clubhouse). If such signals are displayed prior to racing on any day, a courtesy broadcast describing the signals will be made on the four Division VHF channels between 0800 and 0810. See SI 22 for information about COURTESY BROADCASTS and any limitations therein.

**4.2** Code flag AP (Answering Pennant) raised with two sound signals (one sound when lowered) means "The race is postponed. The warning signal will be made not less than 75 minutes after AP is lowered." This changes RRS Race Signals

### 5. SCHEDULE OF RACES

**5.1** Racing will be held on Saturday and Sunday, June 2nd - 3rd, 2012 for PHRF, Warhorse, C&C35, Ultimate 20, Star, & Dinghy Classes and on

Friday, Saturday and Sunday, June 1st - 3rd, 2012 for all remaining classes. It is the intent of the OA and the Race Committee to conduct as many races as practical on each day of racing. The warning for the first starting sequence each day is scheduled at 1000 hours EDT. The Commodore's Champagne Race will be held at the conclusion of racing on Saturday, June 2, 2012. No warning signal shall be made after 1500 hours EDT on the last day of racing, Sunday June 3.

### 6. DIVISIONS, CLASS FLAGS AND STARTING SEQUENCE

**6.1** All divisions, class flags and starting sequences will be posted on the Official Regatta Notice Board and will be available at registration. Please see Attachment A.

### 7. RACING AREAS

**7.1** The Division A, B, and C racing areas are circles located in Lake St. Clair. Division D racing area is located in the Detroit River in the vicinity of Bayview Yacht Club.

**Division A:** 42°24.407' N, 082°51.85' W, which is approximately 4.0 nm from the Peche Island Range Rear Light (F 115 ft PA) on a compass heading of 044°. The radius of Division A circle is 0.6 nautical miles.

**Division B:** 42°21.768' N, 082° 48.883'W, which is approximately 4.6 nm from the Peche Island Range Rear Light (F 115 ft PA) on a compass heading of 090°. The radius of the Division B circle is 0.9 nautical miles.

**Division C:** 42°21.533'N, 082°51.671' W, which is approximately 2.5 nm from the Peche Island Range Rear Light (F 115 ft PA) on a compass heading of 090°. The radius of the Division C circle is 0.65 nautical miles.

**7.2** The Peche Island Range Rear Light is in lower Lake St. Clair, approximately 1.5 nm upstream from the Bayview Yacht Club, and is visible from the lawn in front of the clubhouse in normal conditions. Competitors are cautioned not to sail closer than 100 yards to the Peche Island Range Rear Light or between the Peche Island Range Rear Light and Peche Island at any time.

# Sailing Instructions



Refer to the Lake St. Clair Chart (14850) posted on the Official Regatta Notice Board. Crews are cautioned to allow adequate time to reach the appropriate racing areas in prevailing conditions for the 1000 Warning Signal.

## 8. COURSES

**8.1** The Course, approximate compass bearing and approximate distance from the starting line to Mark 1 shall be displayed from the Race Committee Signal Boat for each division on course boards.

**8.2** All turning marks shall be left to port.

**8.3** An offset mark (inflated orange “hip-hop”) shall be set and shall be rounded to port after first rounding Mark 1. It will be approximately 75 yards from Mark 1 at approximately a 90-degree angle.

**8.4** **Mark 2 will be a Gate. In the event that one of the Gate marks is not in place, boats shall round the existing leeward Mark 2 to port.**

**8.5** The optional Commodore’s Champagne Race will be a continuation of the last race on Saturday. Code flag ‘R’ (yellow cross on a red field) will be displayed at the finish line of the last windward leeward race of the day. Participating skippers will continue through the finish line and proceed to Bayview Yacht Club leaving the rear range light to port. This race will not count for series scoring purposes. Participating skippers are also requested to avoid those race Divisions which may still be racing for series scoring.

## 9. MARKS

Marks 1 and 2 will be orange inflated marks. New marks, when used in accordance with Instruction 13 “Change of Course After the Start,” will be yellow inflated marks. The starting and finishing marks will also be inflated marks.

## 10. THE START

**10.1** Starts will be made in accordance with RRS 26.

**10.2** The starting line will be between a staff displaying an orange flag or shape on the Race Committee Signal Boat, and the port end starting mark and will be located to leeward of Mark 2.

**10.3** Boats whose warning signal has not been made shall avoid the starting area during the starting sequence for other races.

**10.4** A boat starting later than five minutes after her starting signal will be scored Did Not Start (DNS) without a hearing. This changes rules A4 and A5.

**10.5** After the first race of the day, it is the intention of the Race Committee to start subsequent races as soon as practicable after the last boat of each class finishes the previous race.

## 11. INDIVIDUAL RECALLS

The Race Committee may attempt to hail any boat recalled. Division A may be broadcast on VHF Channel 72, Division B may be broadcast on VHF Channel 68, Division C may be broadcast on VHF Channel 71 and Division D may be broadcast on VHF Channel 69. Failure to transmit or receive such notification and the order in which recalls are announced will not be grounds for redress. This changes RRS 62.1(a).

## 12. RETIRING FROM A RACE

Boats retiring from a race are required to inform the Race Committee before leaving the race course either by hail or on the appropriate Division VHF Radio Channel. The penalty for infringing this Sailing Instruction will be determined at the discretion of the jury.

## 13. CHANGE OF COURSE AFTER THE START

**13.1** To change the next leg of the course, the Race Committee will lay a new mark (or move the finishing line) and remove the original mark as soon as practicable. When in a subsequent change a new mark is replaced, it will be replaced by an original mark.

**13.2** If the Race Committee intends to start another race on the same day, it will display the Second Substitute (with no sound) while boats are finishing.

## 14. CHANGE OF COURSE BETWEEN STARTS

If there is a significant wind shift during a series of starting sequences, the Race Committee may signal a change of course for a class as follows: A postponement may be signaled to allow the Race Committee to reset the line. Code Flag C will

be displayed. The magnetic bearing of the new weather mark will be displayed and attention to the change of course will be made by short sound signals until one (1) minute prior to the warning signal for the next class starting. The new Mark 1 will be yellow, but after a second change during the race, the changed mark will be orange. Code Flag C will continue to be displayed to each class for whom the yellow Mark 1 applies.

## 15. THE FINISH

**15.1** The Finish Line will be between a staff displaying an orange flag or shape on a Race Committee boat and the nearby finishing mark. For Courses “3” and “5” the finish line will be located approximately 100 yards to windward of Mark 1. For Courses “4” and “6”, the finish line shall be approximately 100 yards to leeward of Mark 2 (or the former location of Mark 2, if it has been removed) and the finishing mark will be placed on the side **opposite** the starting mark (see illustrations for Courses 4 & 6).

**15.2** The Finish Line for the Commodore’s Champagne Race will be between a staff bearing an orange flag on the balcony of the Bayview Yacht Club (left to starboard) and a nearby white inflated mark in the river (left to port).

## 16. TIME LIMITS

**16.1** The time limit for each class is 90 minutes.

**16.2** Boats failing to finish within 30 minutes after the first boat in her class sails the course and finishes will be scored Time Limit Expired (TLE) without a hearing. This changes RRS 35, A4 and A5.

## 17. PROTESTS

**17.1** A boat intending to protest is requested to report her intention and the boat(s) being protested to the Race Committee at the finish.

**17.2** Protest forms are available at the protest desk located in the Trophy Room at Bayview Yacht Club.. Protests and requests for redress or reopening shall be delivered there within the appropriate time limit.

**17.3** For each class, the protest time limit is 90 minutes after the docking of the Race Committee Signal Boat for the division involved, unless the jury decides to extend the time of submission.

# Sailing Instructions

**17.4** The times of protest hearings and the parties involved will be posted on the Official Regatta Notice Board. This posting constitutes the notice required by RRS 63.2 (Time and Place of the Hearing).

**17.5** There will be an International Jury constituted in compliance with RRS Appendix N, and there may be one or more protest committees not so constituted. As provided in RRS 70.5, there will be no appeal from the decisions of the International Jury. The Chairman of the International Jury in his discretion may assign protests, requests for redress and reports received under RRS 69.1 to either the International Jury or one of the protest committees.

## 18. PROTEST ARBITRATION

(This changes RRS 60.1(b), 63.1, 63.6, 66 and the Notice of Race.)

**18.1** An arbitration meeting may be held prior to the protest hearing for all parties involving violations of RRS Part 2.

**18.2** After a protest form is delivered, one designated representative (conforming to RRS 63.3(a)) of each party will appear before an arbitrator. No witnesses are permitted.

**18.3** After hearing the testimony of each representative, the arbitrator shall reach one of the following conclusions:

- a) There was no breach of a rule. If the representatives agree, the protest is withdrawn and cannot be reopened. If any representative disagrees, the matter goes to the jury for a hearing.
- b) There was a breach of a rule by one or more of the boats involved. The representative(s) of the offending boat(s) have the option of accepting a 40% alternative penalty (calculated as in RRS 44.3(c)) or submitting the matter to the jury for a hearing. If the penalty is accepted, the matter cannot be reopened or made the subject of a redress request.
- c) The matter should go to the jury for a hearing.

**18.4** When the protest is referred to the jury, the arbitrator shall not be a member of the jury hearing the protest.



# Sailing Instructions



## 19. SCORING

**19.1** One race will constitute a series. PHRF and Warhorse classes will be scored Time-on-Distance. Each boat's total score shall be the sum of her scores for all races. This changes RRS Appendix A2.

**19.2** Boats scored TLE will receive points equal to the number of boats finishing within the Time Limit, as described in SI 18, plus 2 points. This changes RRS 35 and A4.

**19.3** Questions regarding scoring may be resolved by the proper filing of a Scoring Inquiry Sheet available at the Protest Secretary's desk. If the resolution of scoring issue proves unsatisfactory, boats will still have a formal request for redress available to them under RRS 62.

**19.4** Competitors (Division D, Thistle, and Lightning classes excluded) participating in the optional Commodore's Champagne Race will be scored based upon their elapsed time commencing from the finish time of the last scored race of the day to their finish time as recorded at the Bayview balcony. PHRF handicapped boats will be scored based upon their TOD handicap adjusted time. The Commodore's Champagne Race results will not count for series scoring purposes.

## 20. HAUL OUT RESTRICTIONS

For the One Design and PHRF classes: all boats shall be afloat prior to 0900 hours EDT on the day of the first scheduled race and shall not be hauled during the regatta, except with written permission of the Race Committee Chairman. Dinghy classes will be allowed to haul out after each day after racing.

## 21. RADIO COMMUNICATION

A boat shall neither make radio transmissions while racing, nor receive special radio communications not available to all boats.

## 22. COURTESY BROADCASTS

An unofficial designated observer may report all visual signals displayed by the Race Committee over VHF Channel 72 for Division A, VHF Channel 68 for Division B, VHF Channel 71 for Division C, and VHF Channel 69 for Division D. Information reported by the designated observer is provided as

a courtesy to competitors and does not in any way alter the competitor's responsibility to observe the Race Committee's visual signals, which govern the conduct of the racing. Errors or omissions on the part of the designated observer will not be grounds for redress. This changes RRS 62.1(a).

## 23. ADVERTISING

**23.1** Boats are urged to refrain from displaying advertisements for businesses or products competing with those of the primary and support sponsors of the event.

## 24. PRIZES

**24.1** Daily awards will be presented to the top three boats in each class. In the event that the class exceeds fifteen boats, daily prizes will also be awarded for fourth and fifth place.

**24.2** For the Commodore's Champagne Race only, a boat scored as finishing in first place in their respective class will receive a bottle of champagne or similar prize.

**24.3** Series prizes will be awarded to the top three boats in each class. In the event that the class exceeds fifteen boats, series prizes will also be awarded to fourth and fifth places.

**24.4** There will be one overall award for one boat on each circle.

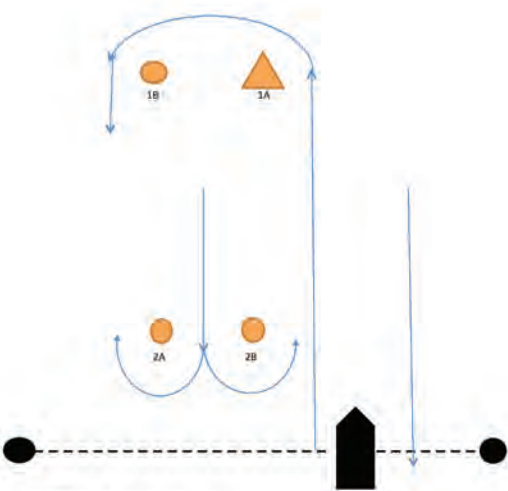
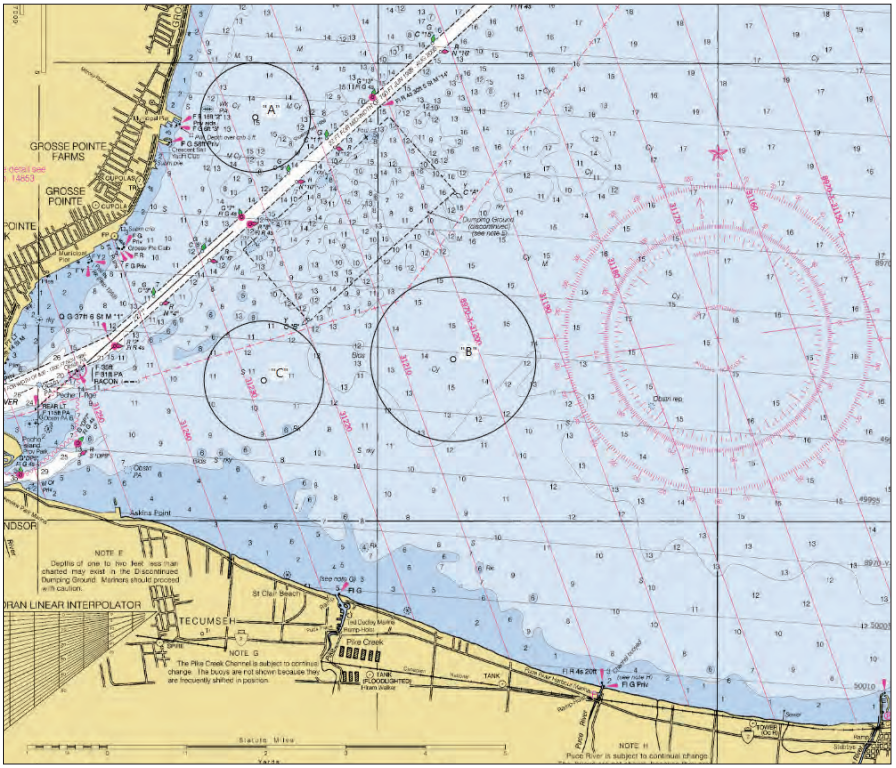
**24.5** The Bayview One Design Regatta Perpetual Trophy and Grand Prize will be awarded to that boat which, in the opinion of the OA, had the best overall performance during the 2012 Bayview One Design Regatta.

## 25. COMPETITORS' CONDUCT

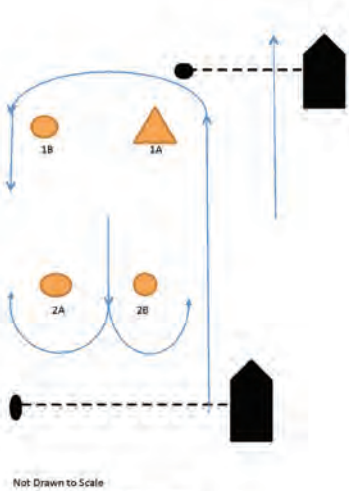
The skipper shall be responsible for the conduct of the crew before, during and after racing.

## 26. MEDIA & TELEVISION

Competitors give absolute right and permission for any photograph and video footage taken of themselves or the boat they are sailing during the event, to be published in any media whatsoever, for either editorial or advertising purposes or to be used in press information.



Not Drawn to Scale  
 Course 4: Start-1A-1B-2A/2B-1A-1B-Finish  
 Course 6: Start-1A-1B-2A/2B-1A-1B-2A/2B-1A-1B-Finish



Not Drawn to Scale  
 Course 3: Start-1A-1B-2A/2B-Finish  
 Course 5: Start-1A-1B-2A/2B-1A-1B-2A/2B-Finish

## Classes



|               |             |             |
|---------------|-------------|-------------|
| Beneteau 36.7 | Catalina 27 | S2 9.1      |
| Tartan 10     | J120        | Rebel       |
| Melges 24     | C&C 35      | Ultimate 20 |
| Cal 25        | Vipers      | Warhorse    |
| Lightning     | Etchells    | NA 40       |
| Thistle       | Star        | PHRF        |
| Express 27    | Wayfarer    |             |

## Registered Boats

10 Forward • 14249 • 14652 • 14774 • 15391 • 15474 • 23 Skiddoo • 313 • 39er • 6  
 • 6730 • 723 • 8084 • Ablaze • AirForce • Alt Bad • Assisted Suicide • Aunt Jamima  
 Treatment • Avatar • BadaBoom • Ballinderry • Baron • Battle Rhythm • Bernida •  
 BêteNoir • bgiohacyid • Big Electric Cat • Black Dog • Black Dog • Black Sheep • Blew  
 By You • Blind Pig • Blue Moon • Boomerang • Bow Plowed • Brandilee • Britannia •  
 Britsar • BruceALMIGHTY • Bubbles • Carinthia • Carrera • Cheap Sister • Chich •  
 Chickenhawk • Clytie • Compulsion • Contender • Courtesan • Das Boot • Das Kleine  
 Boot • Demon Rum • Desparado • Details • Distant Thunder • DIVDAT Racing • Double  
 Jeopardy • Draco • Dream Killer • Dynamite • Eagle One • Entropy • Epic • Escape  
 • Espirit • Evolution • Falcon • Fast Tango • Feierabend • Firing Line • Five Star •  
 Flyer • Flyin' Irish • Flying Circus • Forty-two • FREESTYLE • Funtech Racing • Gail  
 Force • Gnarly Ruca • Gotcha • Grendel • Grizzly • HEAVY ONION • High Voltage •  
 holmebrew • Hoodlum Racing • Horse with No Name • Hot Commodity • Hot Ticket •  
 Impulse • J Hawker • Jackpot • Jalapeno • Jamaica Blue • Jes • JRWoneDesign • Just  
 Add Water • KaPow • Knights of Mayhem • La Buena Vida • La Tormenta • Lady Hawk •  
 Last Dance • Last One • Learning Curve • Legend • Legs A Shakin • Lorax • Mad Duck  
 • Majic Star • Manitou • Marksman • Mary Ann • Medusa • Mika • Mouette • Mr Bill's  
 Wild Ride • Navega Racing • Never Alone • Night Moves • Norebase • Not Sure • Nuke  
 Laloosh • Numb • Obscured By Clouds • Odyssey • OVERDRAFT • Palindrome • Patriot  
 • Pendragon • Phantom • Phia Moon • Piper • Pirogue • Power Trip • Praeceptor •  
 Prestige Worldwide • Project • Promotion • Pterodactyl • Pulsation • Punk Dolphin  
 • Really? • Rebel • Red Hot Chili Thistle • Red Stripe • Redlion • Regardless • Relax  
 • Rhapsody • Risky Business • Rondar Raceboats • Rubicon • Rum Kist • RumBlur  
 • RUSH • Rustler (C) • Sagitta • Sea Fever • Seagoing • Seaweed • Second Wind •  
 Sehnsuchtsbang • Shades • Shamrock • SHELLSHOCK • Silverado • Siochail • Sleek  
 • Slippery • Snake Oil • Solvo • Sorceress • Spinnaker Ninja • Splash Dance • Stephen  
 Polk • Strange Brew • Tar Baby • TAZ • Tess • The Red Boat • Tipsy • Traitor • Tramp  
 • U20 • Under The Kilt • Underdog • Vanguard • Vapour Trail • Velero VII • Volition •  
 Weather Edge III • West Marine Rigging/New England Ropes • Widespread Panic • Wildcat  
 • Wind Dance • Wind Sprint • Windshadow • Windward • Winsome • WTF • zigzag

*~ Daily Sponsors ~*

*FRIDAY - Wolverine Inflatables*



**Wolverine Inflatables**  
A Liferaft Service and Sales Center  
P.O. Box 759 · Taylor, MI 48180

|  |   |
|--|---|
| Mark Bratton<br>586-747-0737<br>markdbratton@aol.com | Hanson Bratton<br>248-640-4407<br>hrbil@aol.com |
|--|---|

*"We Thrive Under Pressure!"*

*SATURDAY - Mike Boston's North Sails*



*SUNDAY - Saganing Eagles Landing Casino,  
Eagle Bay Marina and Bell's Beer*



# Sponsorship



*~ Bayview's Official Automotive Partner ~*



*~ Associate Sponsors ~*



Eagle One Sailing

A Happy Member

Eric Hollerbach

Gov Bradford Kimmel Families

Bayview's Favorite Non-Member

Macro Connect

Nickels Boat Works

Bar Harbor

Wolverine Oil

Karl Kuspa Yacht Services

Nauticare Yacht Services

Crescent Sail Yacht Club

Robert Declercq

Tramp Racing

Details Racing

Melges 24 Class

Cal 25 Class

Old Bear Racing





## *Bayview One Design Regatta Support*

*We have on the order of 130 volunteers that have stepped up to help make the Bayview One Design Regatta a success. We would like to acknowledge and thank the following key people:*

### **Regatta Committee**

Gov Hanson Bratton – 2012 Co-Chairman  
Karl Kuspa – 2012 Co-Chairman  
Gov Bradford Kimmel – 2013 Chairman

### **Principal Race Officers**

Division A - Brian Keith  
Division B - Tricia Smotherman (Chief PRO)  
Division C - Com Timothy Rumptz  
Division D - Com Kent Colpaert

### **International Jury**

Chief Judge - Com William Thorpe

### **Entertainment Committee**

Andrew Groh - Chairman

### **Awards Committee**

Cynthia Ross – Co-Chairman  
Nancy Kuspa – Co-Chairman

### **Champagne Finish**

Jane Sherry

### **Sponsorship Committee**

James Cassidy

### **Parking & Docking Committees**

Charles Dennis – Chairman

### **Race Equipment Committee**

Ryan Farrell  
Keith Ziegler

### **Registration Committee**

Kathleen Zemmin – Chairman

### **Media Committee**

Sandra Svoboda

### **Head Class Coordinator**

James Best

### **Scoring Committee**

Luiz Kahl – Chairman

### **Crescent Sail Yacht Club**

Michael Williams  
Thomas Vickers

### **Committee Boats**

Gordon Smith – Chairman

#### ***Division A***

Hooz A Bum – Michael Schrage – Signal Boat  
Ecosse – Alexander Fullerton – Weather Mark  
Frequent Flyer – Peter Durand – Leeward Mark

#### ***Division B***

Thor – Donald Fires – Signal Boat  
Sail Chaser – Com. Amsler/C.Stevens – Weather Mark  
Ragu – Gary Viola – Leeward Mark

#### ***Division C***

Gezellig – Frank Stellingwerf – Signal Boat  
Goose – Gordon Smith – Weather Mark  
No Mas – John Johns – Leeward Mark

#### ***Division D***

Com Kent Colpaert – Signal Boat

#### ***Press & Sponsor Boat***

Aquarius – Walter & Michael Cytacki

#### ***Photographer Boat***

Mark Bratton

### **Bayview Yacht Club Management**

Mark Steffke  
Kerrie Barno  
Marilyn Wakula



*Proud sponsor of the Inaugural*  
**Bayview One Design  
Regatta**



**ACURA**  
ADVANCE.



*Proud sponsor of the Inaugural*  
**Bayview One Design  
Regatta**

**B E L L ' S**®



**Inspired Brewing**®